

One Cell, One Switch Activation in Grid 3

Introduction

This tutorial explains how to change the settings in Grid 3 so that the user can activate with a single switch press. Some users need an option to simply press a switch to activate a single cell on the screen in one step. This can be useful when a user is doing activities with a single cell message (e.g. visual scene with one hotspot) and exploring cause and effect activities (e.g. playing music).

Learning Objectives

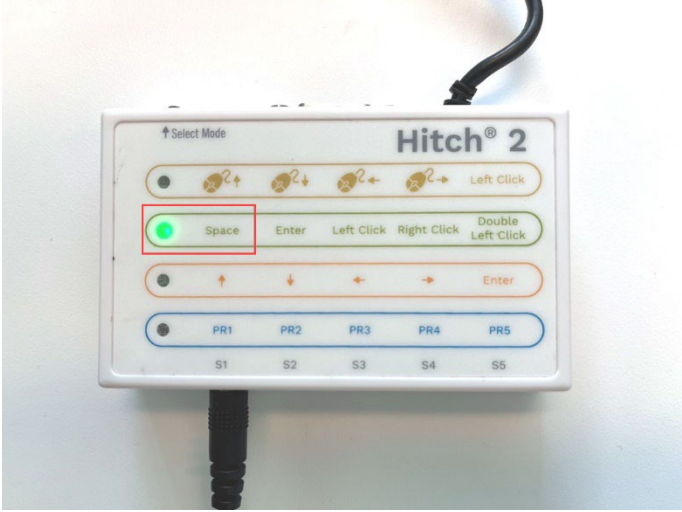
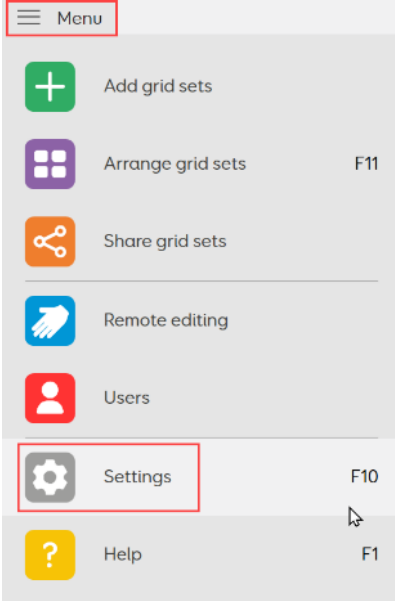
Completing this tutorial will give you experience:

- Navigating switch access settings in Grid 3
- Adjusting settings to use Grid 3 for cell activation with one switch press (no scanning) in certain Grid Sets
- Adjusting Cell Accessibility settings in Grid 3 to limit switch activation to certain areas

This tutorial assumes that you are using:

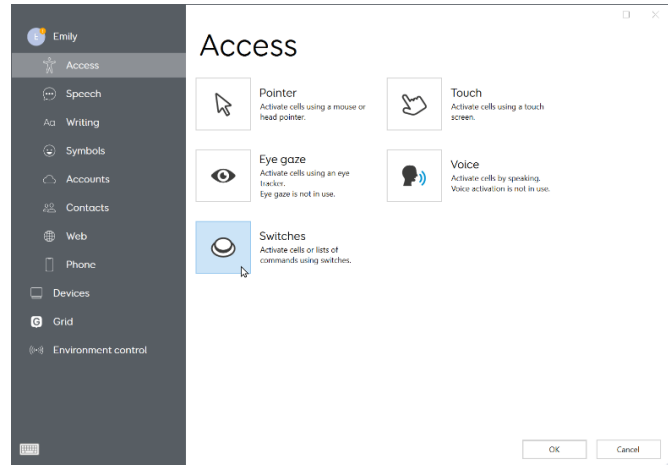
- A device running Windows operating system
- A switch and interface connected and set up to the device (e.g. Jelly Bean and Hitch 2.0)
- Grid 3 software

Steps to Follow

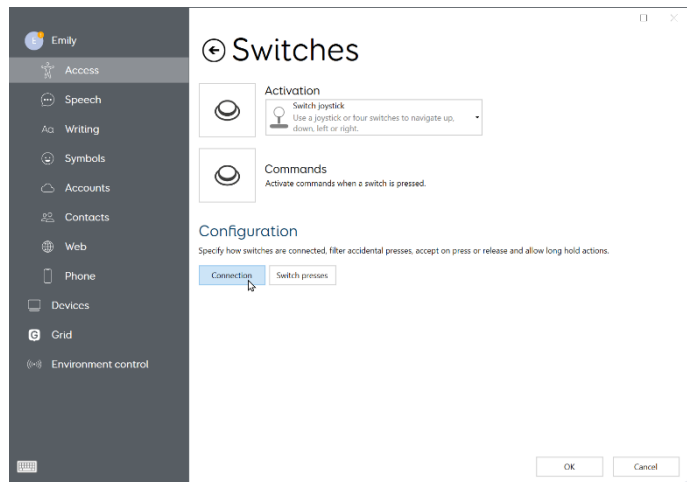
Step	Instruction	Visual Depiction
1	<p>Check interface to ensure that the switch is emulating the keyboard command that you would like to use for activation. Space is a common choice.</p> <p>The picture shows a Hitch 2.0 with a switch in the position and mode to emulate the Space key. This is an example, switch activation can be achieved with many different interfaces, settings, and/or built in switch ports depending on device.</p>	
2	<p>Open Grid 3 on your device.</p> <p>Select the Grid 3 menu on the top left corner, then select Settings.</p>	

Step Instruction Visual Depiction

3 Select Access, then the switch icon for Switches.



4 Select Connection (under Configuration).

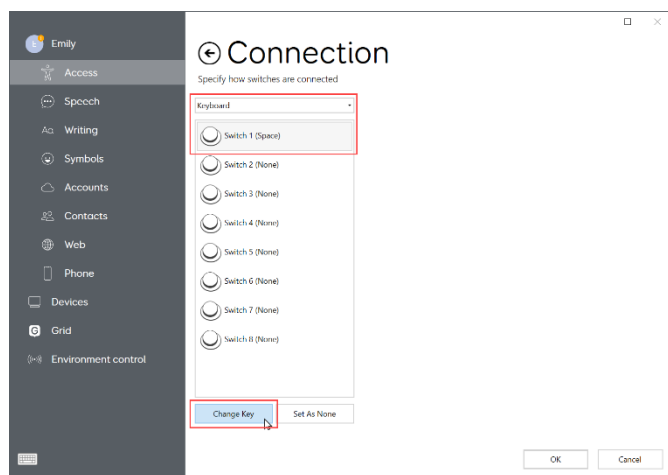


5 Use the drop-down menu near the top to select Keyboard.

Select Switch 1 and Change Key

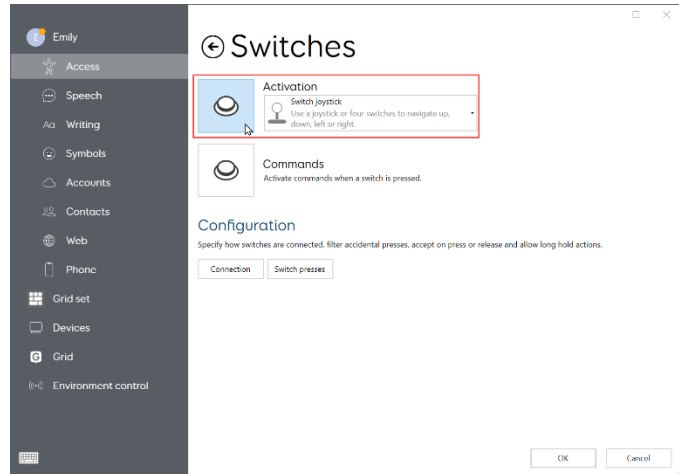
Then press the keyboard key you programmed the switch to emulate in Step 1 (in this example we assigned Space).

Then press the back arrow.

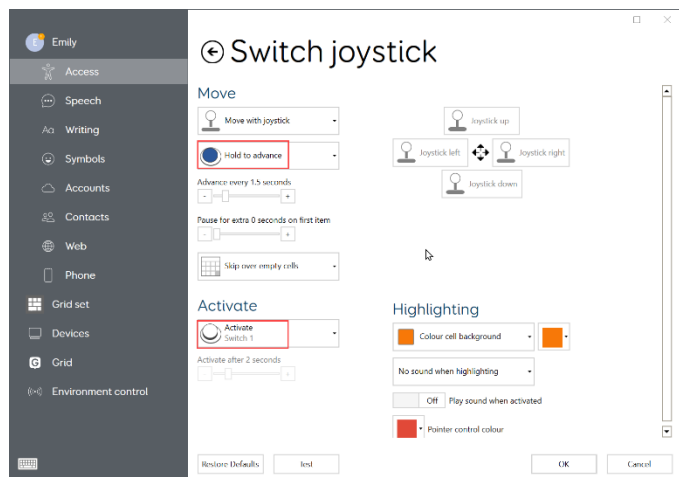


Step Instruction Visual Depiction

- 6 Select the drop-down menu to change the Activation method to joystick.
- Then select the Activation icon to the left of the drop-down menu.



- 7 Default settings should be on Hold to advance and Activate with Switch 1.
- This completes the setup of the switch.



Step	Instruction	Visual Depiction
------	-------------	------------------

8 Next, go to your desired Grid and make sure it is designed to be only one cell.

You can change Cell Accessibility on buttons that aren't intended for the user to activate (e.g. the Back button cell on the Grid pictured).

To do this, select the lines on the top left corner. Select Edit Grid to go to edit mode. Select the cell, then Cell Accessibility, and set it to Pointer and touch only.

