

What is Grid 3?

Introduction

Grid 3 is a software developed by Smartbox Assistive Technology that is designed to help individuals with disabilities communicate and interact with technology. It provides a customizable interface for users who may have complex communication needs, allowing them to use alternative methods of communication, control their environment, access the internet, and operate other applications.

Learning Objectives

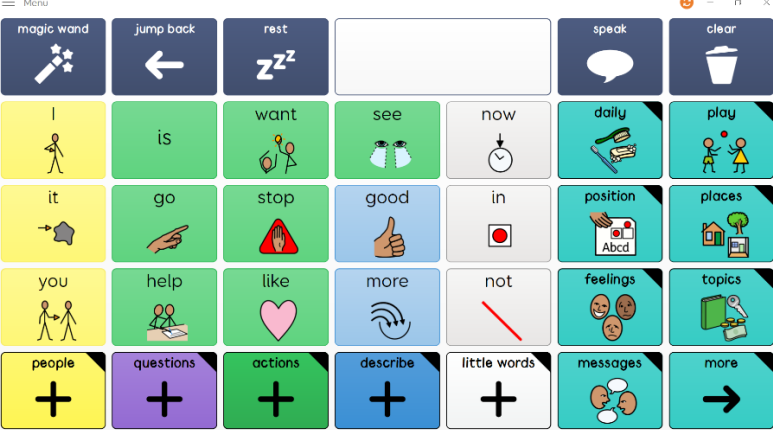


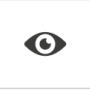
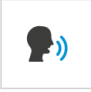

Completing this tutorial will give you experience:

- Getting started with Grid 3.
- Navigating Grid 3.
- Getting started with a free trial of Grid 3.

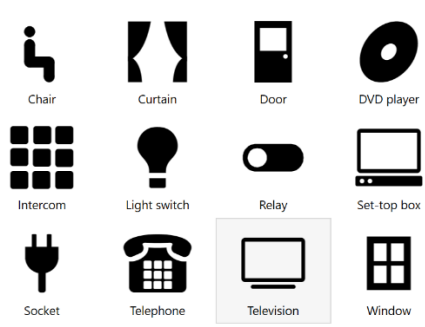
This tutorial assumes that

- You are new to Grid 3.
- You are using Grid 3 on a Windows based device.
- You need a brief introduction to Grid 3 to help you get started using it.

Key Features

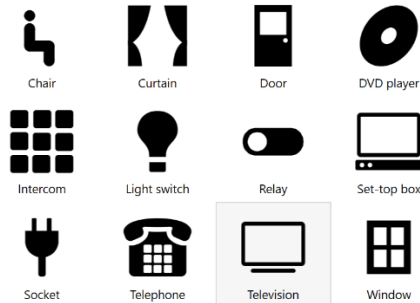
Feature	Description	Visual Depiction
1	<p>Alternative Communication: Grid 3 supports symbol-based communication systems, text-to-speech, and other communication methods that can be personalized to suit the user's needs.</p>	 <p>The image shows a screenshot of the Grid 3 communication interface. It features a grid of 48 icons arranged in 4 rows and 12 columns. The icons represent various words and actions, such as 'I', 'is', 'want', 'see', 'now', 'daily', 'play', 'it', 'go', 'stop', 'good', 'in', 'position', 'places', 'you', 'help', 'like', 'more', 'not', 'feelings', 'topics', 'people', 'questions', 'actions', 'describe', 'little words', 'messages', and 'more'. Each icon is accompanied by a small text label. The interface also includes a 'Menu' button at the top left, a 'magic wand' icon, a 'jump back' arrow, a 'rest' icon, a 'speak' button, and a 'clear' button.</p>
2	<p>Accessible Interface: The software can be operated through various input methods such as eye-tracking, touch screens, switch control, and more, making it accessible to people with different physical abilities.</p>	<h3 data-bbox="662 1108 829 1150">Access</h3> <div data-bbox="662 1178 954 1268">  <p>Pointer Activate cells using a mouse or head pointer.</p> </div> <div data-bbox="987 1178 1279 1268">  <p>Touch Activate cells using a touch screen.</p> </div> <div data-bbox="662 1304 954 1394">  <p>Eye gaze Activate cells using an eye tracker. Eye gaze is not in use.</p> </div> <div data-bbox="987 1304 1279 1394">  <p>Voice Activate cells by speaking. Voice activation is not in use.</p> </div> <div data-bbox="662 1430 954 1520">  <p>Switches Activate cells or lists of commands using switches.</p> </div>


Feature	Description	Visual Depiction
---------	-------------	------------------

3	<p>Environmental Control: Grid 3 can be integrated with smart home technology, allowing users to control lights, doors, and other appliances.</p>	<p>Environment control</p> <p>Add accessory</p> 
---	---	--

Environment control

Add accessory

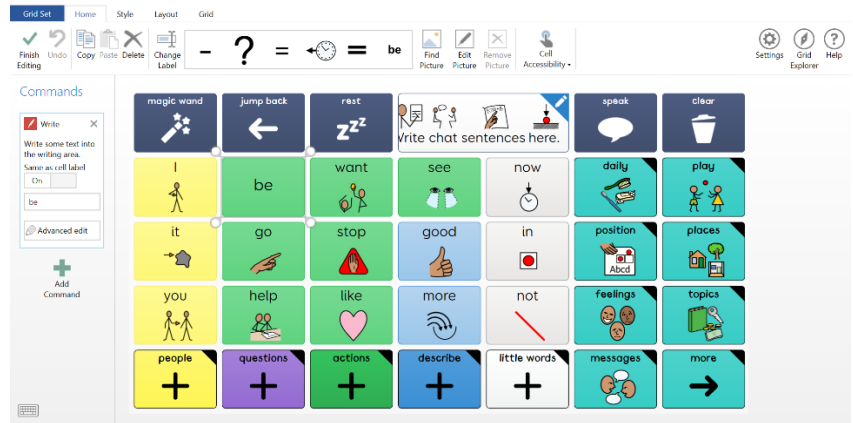


4	<p>Learning and Literacy Tools: It includes tools and activities to support learning, literacy, and cognitive development, making it suitable for both children and adults.</p>	
---	---	---



Feature Description Visual Depiction

5 Customizable Grids: Users can create and customize grids tailored to the individual's needs, whether for communication, education, or entertainment. There is a SETBC tutorial specifically designed for customizing grids.



6 For SET-BC trials of Grid 3 please use the document named Grid 3 Trial Checklist to get you up and running with the software.

Grid 3 Trial Checklist

This checklist is designed to assist with the short-term loan of Grid 3 software. It can help the school team decide if a long-term loan of Grid 3 is a good fit for the student. For additional resources, please visit www.setbc.org: Grid 3 and Data collection.

Week 1

Task 1

- Receive the loan and coordinate with the school IT department. Set up Wi-Fi access.
- Determine a secure storage location and a plan to charge the technology.
- Inform staff who will support the trial on how to retrieve and store the equipment each day.
- Schedule a meeting to discuss the outcome of the short-term loan in 3-4 weeks.