

# Switch Access in Grid 3

## Introduction

This is a tutorial on setting up Switch Access in Grid 3 on a Windows device. Grid 3 allows for customization where specific actions or commands can be assigned to each switch. Common actions include keyboard commands, navigating menus, selecting items, or triggering specific functions within applications.

Outlined in this tutorial is the set up for one method of switch access. Each switch will be configured with a keyboard command. In many activities, including Grid 3, one switch is set up as the 'Space' key to advance or go to the next item. A second switch is assigned the 'Enter' key to select or choose the item.

Prior to using this tutorial, be familiar with the switch interface. If using an integrated AAC (alternative communication) device, such as a Grid Pad or Tobii I-Series, the Hardware Settings app or similar switch interface software may be required to configure the built-in switch ports. If using switches with programs other than Grid 3, check the required configuration in the settings menu of each application.

## Learning Objectives

Completing this tutorial will give you experience with:

- How to find the Access settings for Switches in the Grid 3 menu.
- How to connect a keyboard command to a switch.
- Becoming familiar on how to change settings in the Switch scanning menu.
- Adjusting Advance and Activate settings from One Switch Auto Scanning (default setting) to Two Switch Step Scanning.

## This tutorial assumes that you have:

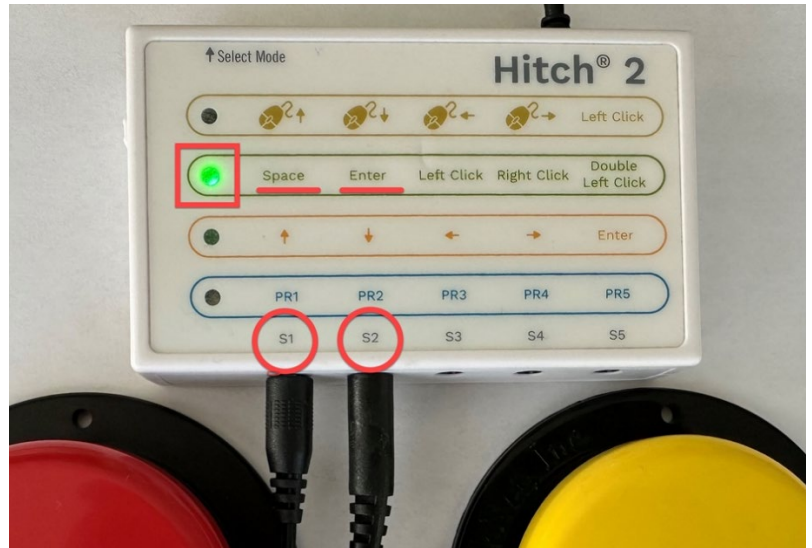
- A device with a Windows operating system (laptop, tablet or integrated AAC device).
- A switch interface that is already connected and set-up to the device, e.g., AbleNet Hitch 2.
- Two switches that are connected to the switch ports. In this tutorial, Switch 1 (S1) will be assigned the Space key and Switch 2 (S2) will be set up as the Enter key.
- Grid 3 software.

## Connecting Switches to Grid 3

Step	Instruction	Visual Depiction
------	-------------	------------------

- Match the switch ports to the keyboard commands on the Switch Interface or the Hardware Settings App.

In this tutorial, the mode on the Hitch 2 Switch Interface is set to the second row, indicated by a green light, so S1 is for Space and S2 is for Enter.

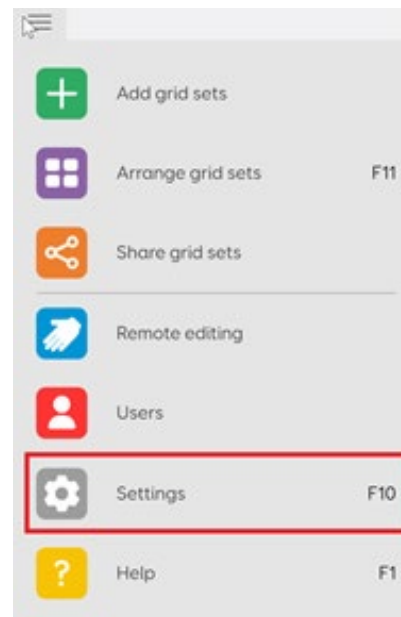


- Start Grid 3 software on your device.

Select the drop-down **Grid 3 menu** (*three lines, top left corner*).

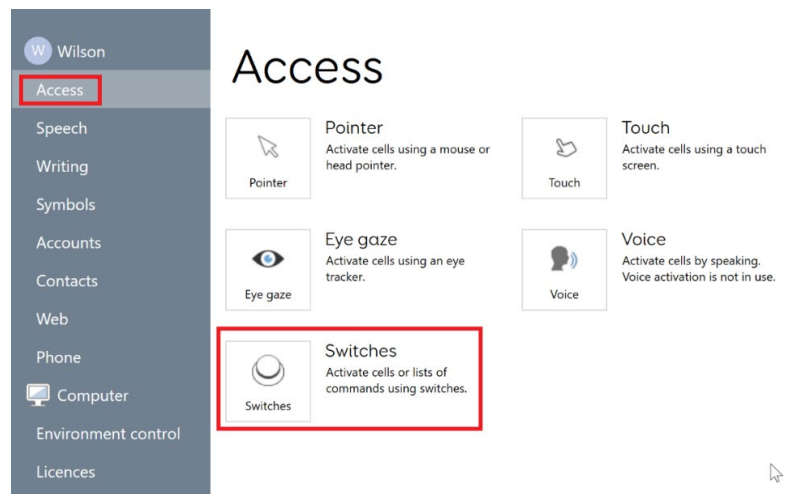
Select **Settings**.

Or use keyboard shortcut F10.

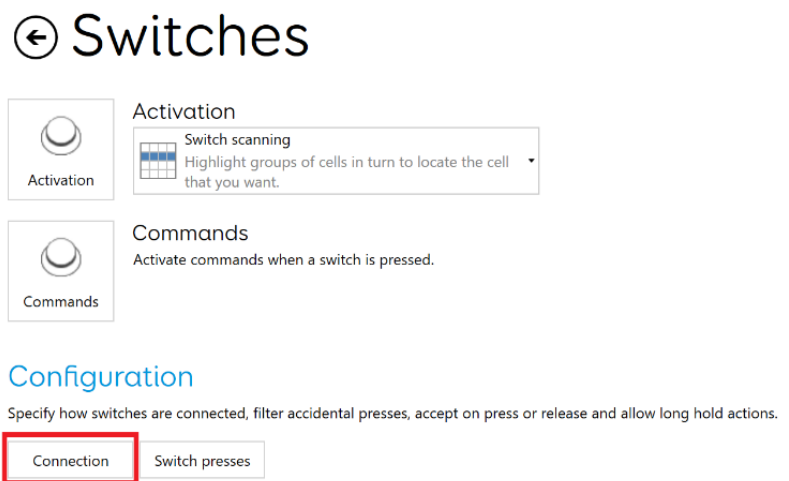


Step Instruction Visual Depiction

3 In Settings, select **Access**, then **Switches**.



4 At the bottom of the Switches menu, under **Configuration**, select **Connection** to link the Grid 3 software to the switches.



Step	Instruction	Visual Depiction
------	-------------	------------------

- 5 Use the drop-down menu for configuration options that assign functions or commands to each switch. In this example, select **Keyboard** in the drop-down menu.

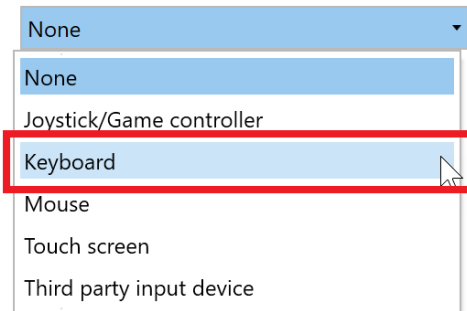
A list of switches will then appear. The default setting is Switch 1 is assigned keyboard command F1, Switch 2 is F2 etc.

In the next step, assign a new keyboard function to each switch:

- Space for Switch 1. This switch will advance or move to the next item.
- Enter for Switch 2. This switch will select or activate the cell.

## ← Connection

Specify how switches are connected



Step	Instruction	Visual Depiction
------	-------------	------------------

6	<p>Select <b>Switch 1</b>. Then at the bottom of the list of switches, select <b>Change Key</b>.</p>	
---	--	--

Follow the prompts in the **Press Key** menu. Press the keyboard stroke for the desired command. For Switch 1, press **Space**.

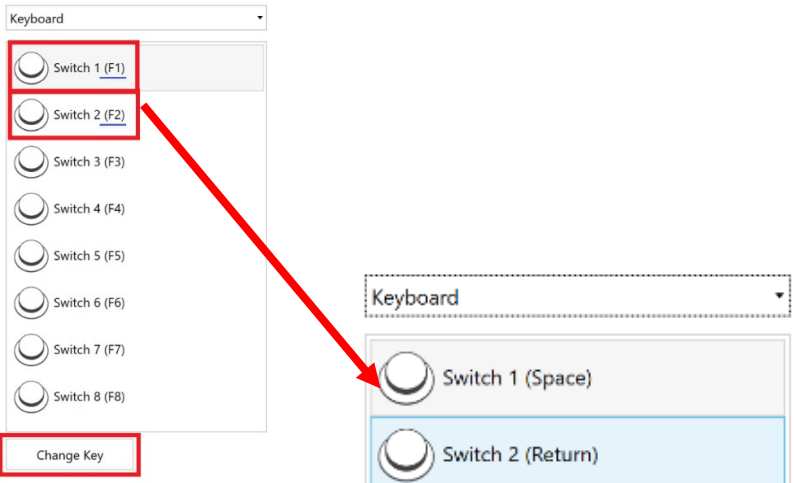
Repeat the steps for **Switch 2**, press **Enter**.

When these steps are completed, the keyboard command will be indicated in the list of switches in parentheses: Switch 1 (Space), Switch 2 (Enter).

Connecting switches to Grid 3 is now complete.

## ← Connection

Specify how switches are connected



## Press Key

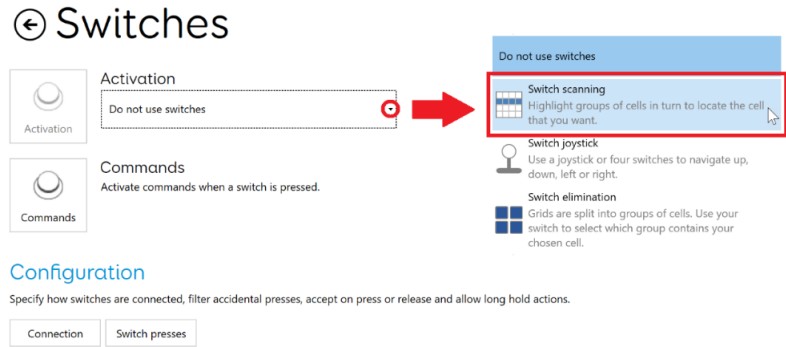
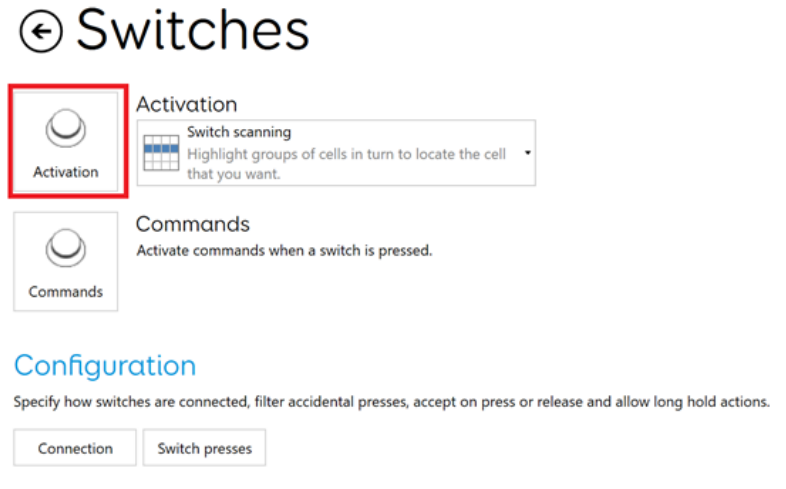


Press the keyboard key for this switch.

Once this key has been chosen as a switch, you will not be able to use it as a standard keyboard key within Grid 3.

Step	Instruction	Visual Depiction
7	<p>To learn more about connecting and assigning commands in Grid 3, select the URL, or use a web search:</p> <p><i>'Smartbox Hub Grid 3 connect a switch'.</i></p> <p><i>'Smartbox Hub add a command to a switch in Grid 3'.</i></p>	<p>Smartbox Hub resources:</p> <p><a href="#">Where are my access settings in Grid 3?</a></p> <p><a href="#">How do I connect a switch to Grid 3?</a></p> <p><a href="#">How do I add a command to a switch in Grid 3?</a></p> <p><a href="#">Why is my switch not working with Grid 3?</a></p> <p><a href="#">Using a switch joystick with Grid 3</a></p> <p><a href="#">Using switch elimination in Grid 3</a></p>

## Setting Up Switch Scanning Settings

Step	Instruction	Visual Depiction
1	<p>From the Connection menu, return to the <b>Switches</b> menu using the left arrow.</p> <p>Use the drop-down menu under <b>Activation</b> and select <b>Switch scanning</b>.</p>	 <p>The screenshot shows the 'Switches' menu with three options: 'Activation', 'Commands', and 'Configuration'. The 'Activation' dropdown menu is open, showing 'Do not use switches' and 'Switch scanning'. A red box highlights the 'Switch scanning' option, and a red arrow points to it from the 'Do not use switches' option.</p>
2	<p>Select <b>Activation, Switch scanning</b> menu to adjust switch scanning settings such as switch response time, and switch scanning methods to match the user's needs and abilities.</p>	 <p>The screenshot shows the 'Switches' menu with three options: 'Activation', 'Commands', and 'Configuration'. The 'Activation' option is highlighted with a red box.</p>

Step Instruction

Visual Depiction

3 In Switch scanning, the default is set for Single Switch Auto Scanning, where one switch selects the desired item while advancing is automatic. Use the right scroll bar to see the whole menu. This is a summary of the menu options:

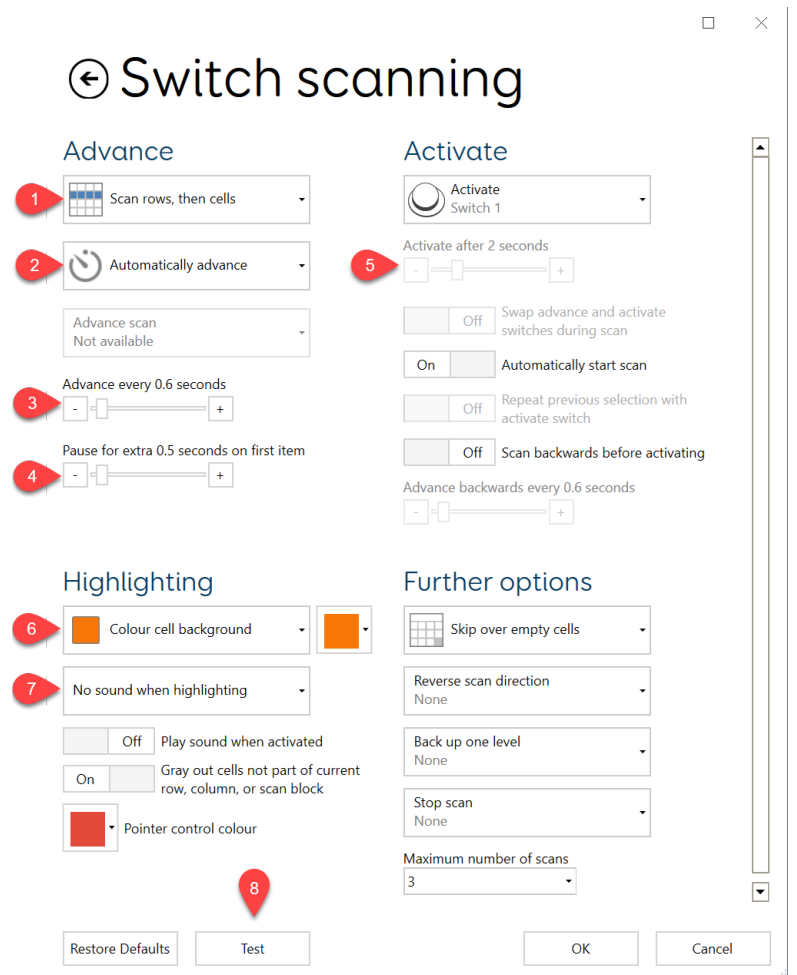
Adjust **Advance** settings such as scan style (1) and scan type (2) and frequency (3).

You can pause the scan on first item prior to starting scan (4). This can help a user become familiar with the page set prior to starting the switch scanning.

Adjust **Activate**, such as start scan after a specified duration (5).

Adjust **Highlighting** and **Further options**, such as progress indicator and border colour (6) and auditory feedback (7).

Use the **Test** button (8) at the bottom of the menu for a demonstration of the selected settings.





Step Instruction

Visual Depiction

4 To set up Two Switch Step Scanning, where Switch 1 will advance the scan and Switch 2 will select the item, make the following adjustments:

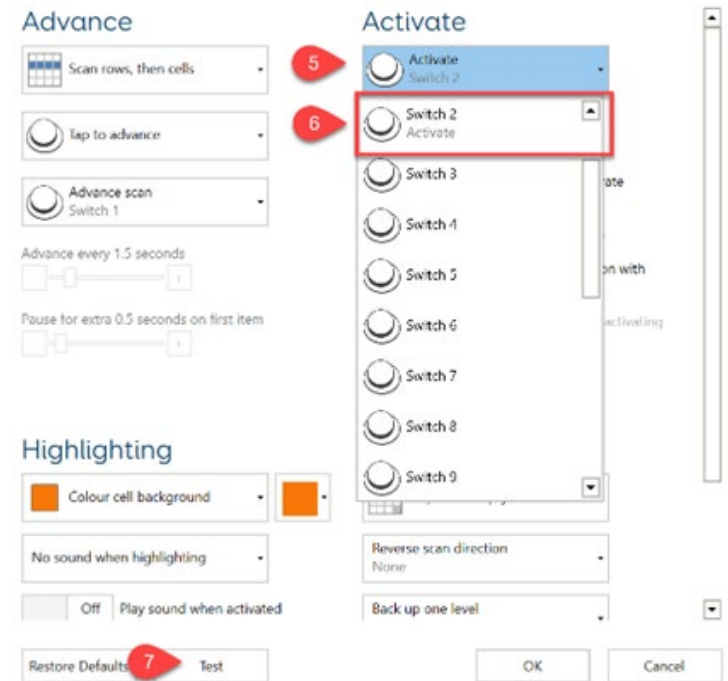
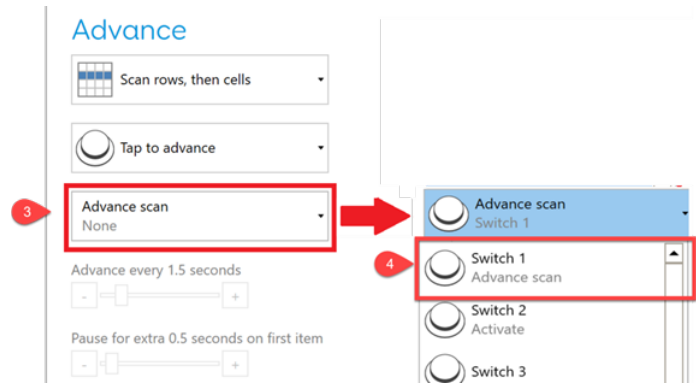
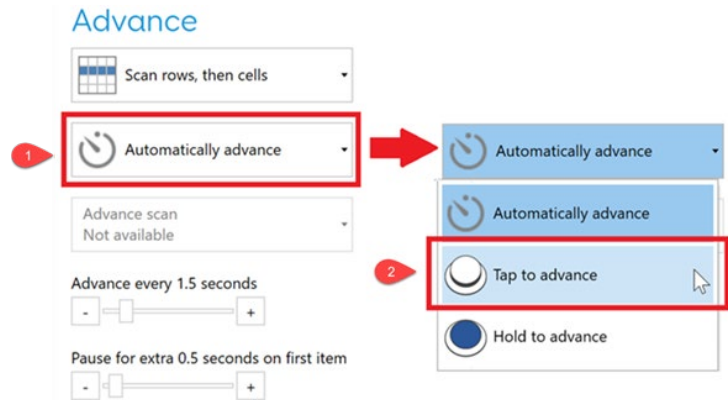
In the **Advance** drop-down menu, change **Automatically advance** (1) to **Tap to advance** (2).

The **Advance scan** menu will then become available. Use the drop-down menu (3) to assign **Switch 1** (4) to advance or move to the next item (keyboard command Space). Note: *Space must match the Switch Interface settings.*

In the **Activate** menu, use the drop-down menu (5) to assign **Switch 2** (6) to activate or select the item. Again, note: *Enter must match the Switch Interface settings.*

Use the **Test** button (7) to check the adjusted switch scanning settings. Two Switch Step Scanning is now set-up.

Return to Grid Explorer via **Grid 3 menu** (three lines, top left corner).



Step	Instruction	Visual Depiction
5	To learn more about adjusting activation, commands, or switch press behaviours in Grid 3, select the resource URL, or web search:  <i>'Smartbox Hub switch scanning with Grid 3'.</i>	Smartbox Hub resources:  <a href="#">Using switch scanning with Grid 3</a>  <a href="#">How can I speed up switch access in Grid 3?</a>  <a href="#">How do I set up auditory feedback for my access method?</a>  <a href="#">How do I change between two access methods in Grid 3?</a>