

Eye Gaze Set-up in Grid 3

Introduction

This tutorial introduces Eye Gaze Access in Grid 3 on a Windows device. You will learn about connecting an eye gaze camera to Grid 3 software and adjusting the eye gaze settings. Under eye gaze settings, you can adjust how gaze can activate or select a target, and the style of feedback or highlighting the student will get from the device. The settings will depend on the user's skill level, the complexity and familiarity of the grid set and the goals. Input from the school and SET-BC supports can assist in deciding the settings.

To use this tutorial, install an eye gaze camera and attach it to the device according to the manufacturer instructions. With integrated systems, such as a Grid Pad or Tobii I-Series, the camera is built into the device and some settings may be adjusted in the Hardware Settings app or similar software. This tutorial will focus on *dwell to click* for the activation method.

Learning Objectives

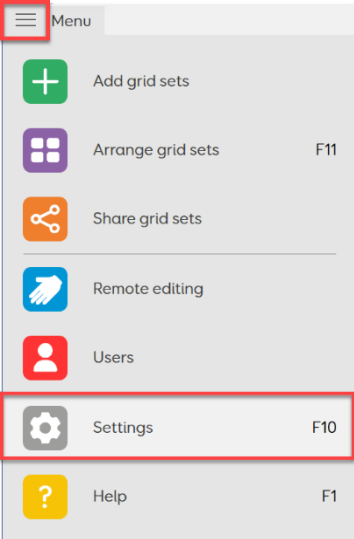
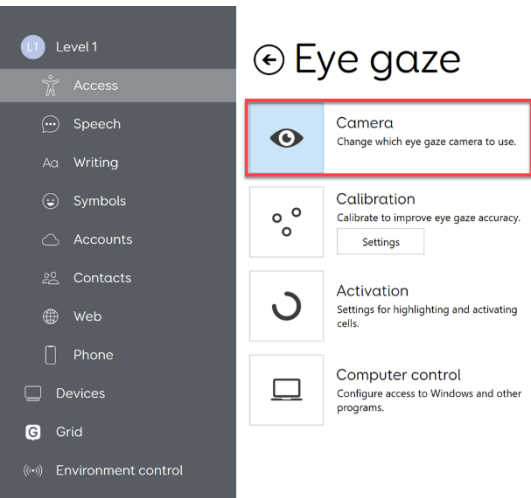
Completing this tutorial will give you experience with:

- Locating the Access settings for Eye gaze in Grid 3.
- How to connect an eye gaze camera to Grid 3.
- Adjusting Activation and Highlighting settings in the Eye gaze menu.

This tutorial assumes that you have

- A device with a Windows operating system, such as a laptop, tablet or integrated AAC (Augmentative and Alternative Communication) device.
- An installed eye gaze camera and positioning bracket or the camera built into the integrated device. A Tobii camera is used in this tutorial.
- Grid 3 software.

Connecting Eye Gaze Camera to Grid 3

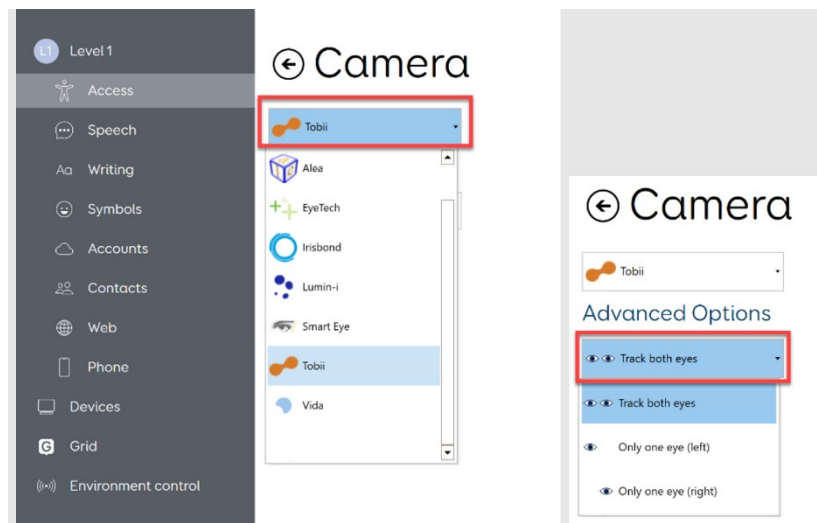
Step	Instruction	Visual Depiction
1	<p>Open Grid 3 software on your device.</p> <p>Select menu bar (<i>three lines, top left corner</i>). This is the drop-down Grid 3 menu.</p> <p>Select Settings.</p> <p>Or use keyboard shortcut, F10.</p>	
2	<p>In Settings, select Access, then Eye gaze.</p>	
3	<p>In the Eye gaze menu, select Camera.</p>	

Step Instruction Visual Depiction

4 In the Camera menu, use the drop-down menu to select the camera being used.

The **Advanced Options** drop-down menu will then appear. Select which eyes to track.

Grid 3 software is now connected to the camera.



5 To learn more about Eye gaze set up in Grid 3, select the URL, or use a web search:

[Where are my access settings in Grid 3?](#)

[Getting set up to use eye gaze in Grid 3](#)

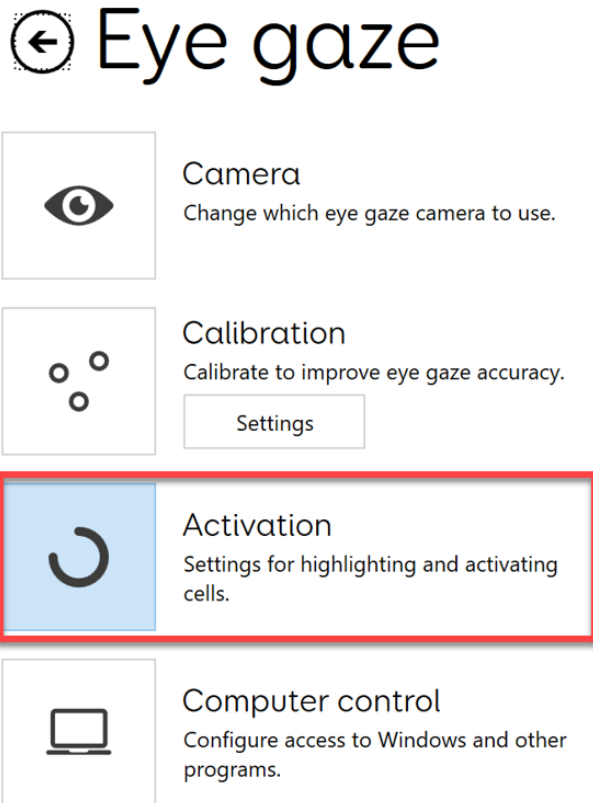
[Eye gaze settings in Grid 3](#)

'Smartbox Hub Grid 3 eye gaze'.

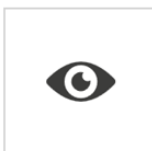
'Smartbox Hub Grid 3 eye gaze settings'.

Setting Up Eye Gaze Settings

Step	Instruction	Visual Depiction
------	-------------	------------------

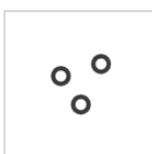
1	Use the left arrow to return to the Eye gaze menu.	
	Select Activation to adjust how targets are activated and the type of highlighting or feedback the user will receive with gaze interaction.	

← Eye gaze



Camera

Change which eye gaze camera to use.



Calibration

Calibrate to improve eye gaze accuracy.

Settings



Activation

Settings for highlighting and activating cells.



Computer control

Configure access to Windows and other programs.

Step	Instruction	Visual Depiction
2	<p>The default Eye gaze setting is <u>Dwell to click</u>. (1)</p> <p>Change the Activate settings such as the progress bar (2) and length of time for activation. (3)</p> <p>Adjust Highlighting such as a dot (4) to indicate the location of the gaze, or sound (5) associated with activation.</p>	

- 3 To learn more about adjusting eye gaze activation and highlighting in Grid 3, select the resource URL, or web search:

'Smartbox Hub Eye gaze settings in Grid 3.'

Smartbox Hub resources:

[Eye gaze settings in grid 3](#)

[How do I change between two access methods in Grid 3](#)