

# Adding a grid set to Grid 3 using Online Grids

## Introduction

In Grid 3, users can download and add grid sets from the Smartbox Community using Online Grids. These grid sets are publicly accessible by any user who has a Smartbox account.

## Learning Objectives

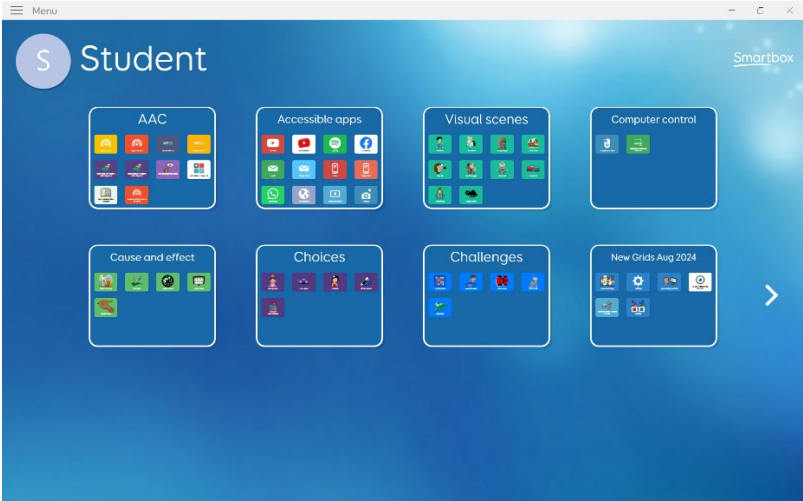
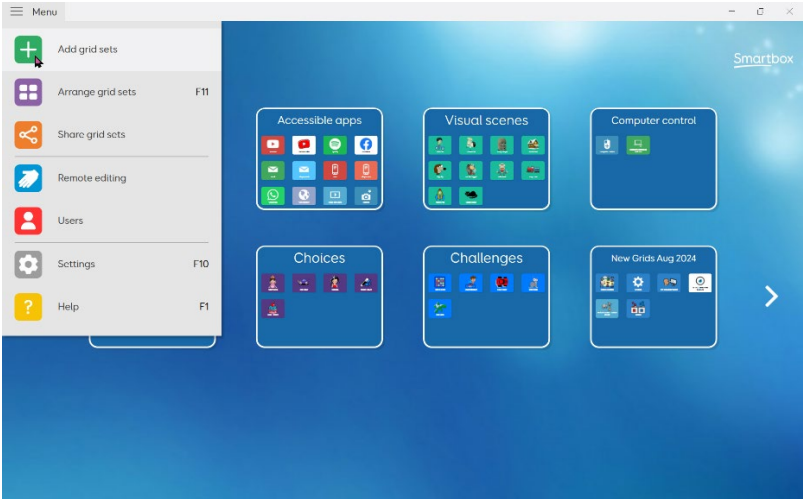
Completing this tutorial will give you experience:

- Searching for and downloading Grid 3 grid sets from Online Grids.

## This tutorial assumes that

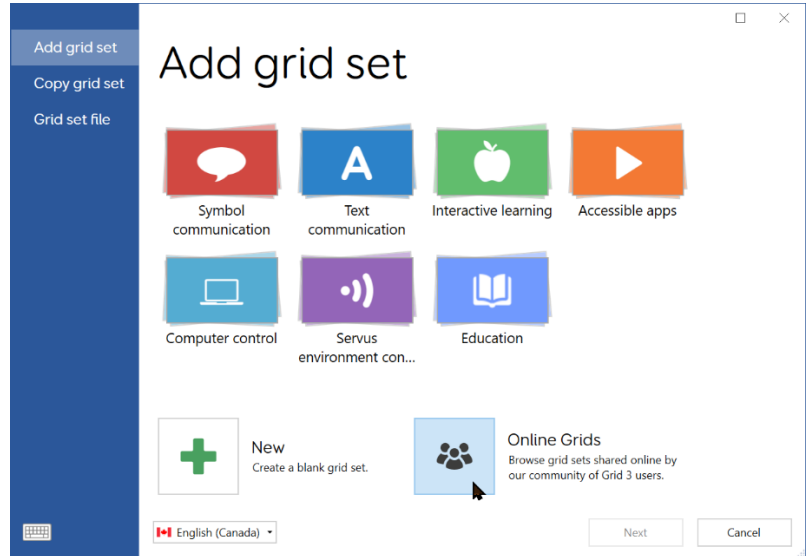
- Users have Grid 3 installed on their computer.
- Users have signed up for a Smartbox account.

## Steps to Follow

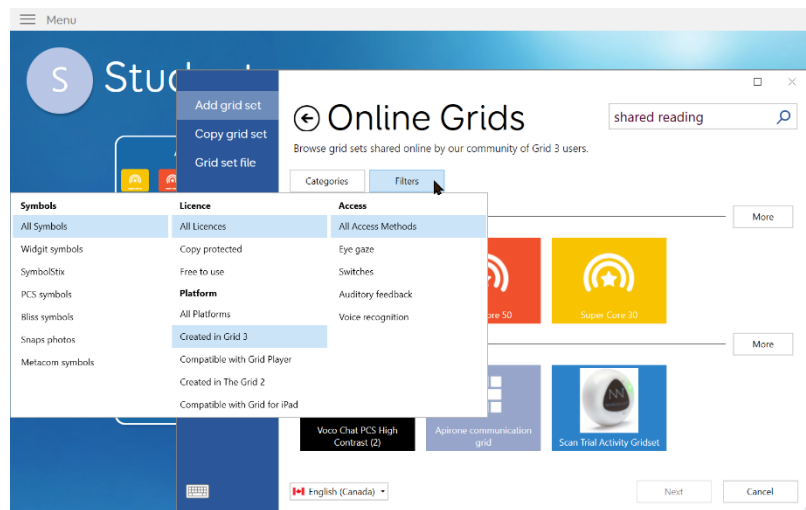
Step	Instruction	Visual Depiction
1	Open Grid 3 to the user profile that the new grid sets will be downloaded to.	
2	In Grid Explorer, browse to the menu bar (three lines, top left) and select "Add grid sets".	

Step Instruction Visual Depiction

3 Select Online Grids from the bottom right corner.

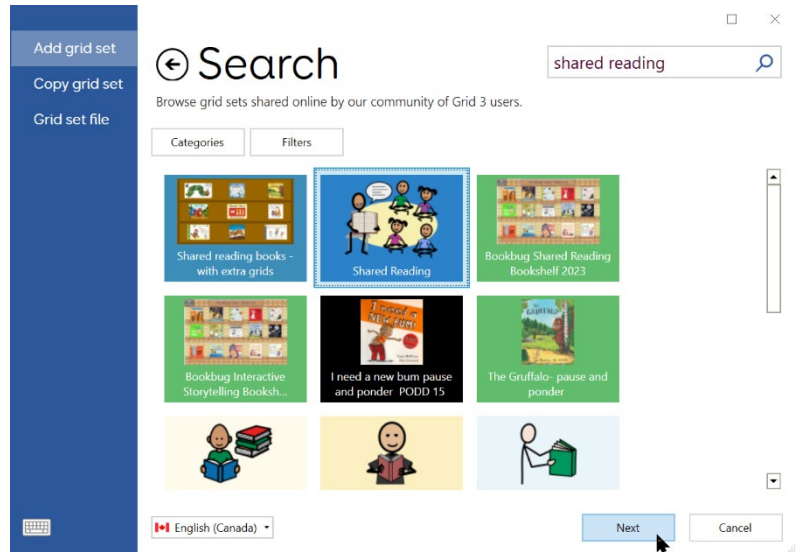


4 Search for something specific using the magnifying glass in the top right corner. The category and filters buttons can be used to help narrow down the search.

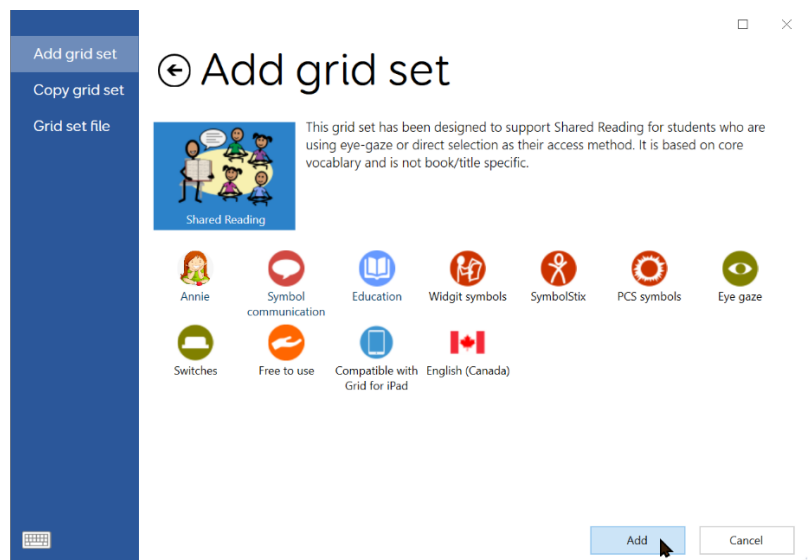


Step Instruction Visual Depiction

5 Select a grid set by clicking its icon and then clicking Next.

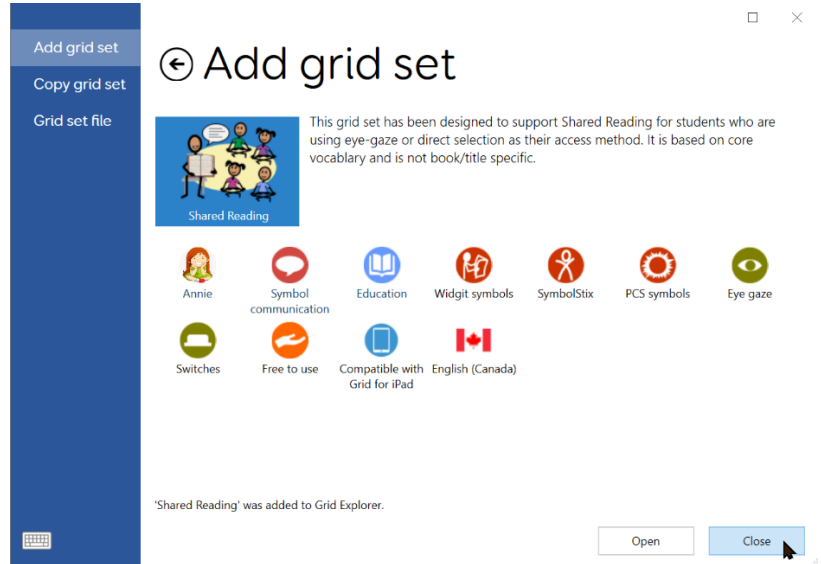


6 A brief description of the grid set will be shown. To download the grid set and add it to Grid Explorer, Click Add.



Step Instruction Visual Depiction

7 Then click close.



8 The grid set has now been added to Grid Explorer.

