

# JAWS – Navigating Google Slides

## Introduction

This tutorial will explain how to use JAWS to open a Google Slides presentation, browse through the slides, and listen to its content.

## Learning Objectives

Completion of this tutorial will give you experience with:

- Opening a Google Slides presentation.
- Reading a Google Slides presentation.

## This tutorial assumes that you have

- A Google account.
- Google Chrome as the web browser.
- Basic skills using JAWS and web browsers.
- Basic skills with digital presentation programs.

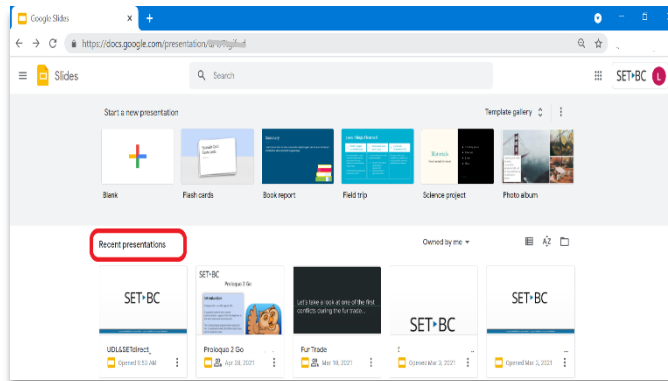
## Case Study

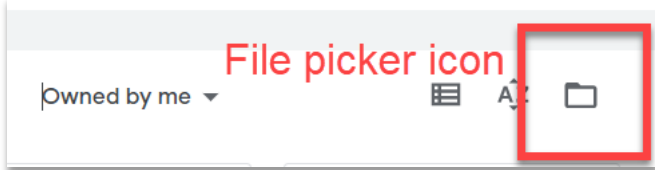
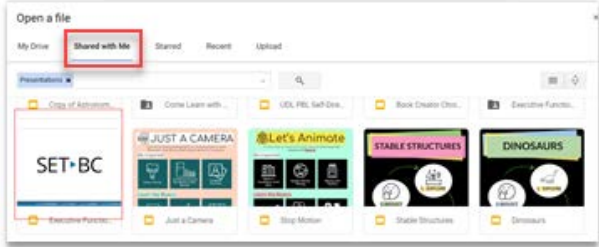
Hannah is a Grade 8 student in a school that uses Google Workplace for Education apps. Her teachers often use Google Slides as a presentation tool. These presentations are shared with Hannah using her student Google account. She would like to open and read the presentations during her study time.

**Open a Google Slides presentation that has already been viewed**

1

- Launch JAWS
- Launch Google Chrome.
- Open Google slides at [slides.google.com](http://slides.google.com)
- Press **Insert+Z** – Toggle JAWS Virtual PC cursor **ON**
- Press **Tab** – Moves the JAWS focus through the options in the page.
- Locate the **Recent Presentations** menu using the Tab button.
- Press **Left/Right arrows** – Use the left/right arrows to enter the Recent Presentations menu and choose a presentation.
- Press **Enter**.
- You will hear “screen reader support enabled.”



| Open a presentation that has been shared and not viewed. |   |  |
|--|---|--|
| 2  | <p>Press <b>Tab</b> to move the JAWS focus to the Open file picker icon.</p> <p>Press <b>Enter</b>.</p>   |  <p>A screenshot of a file picker interface. The text "Owned by me" is on the left. In the center, the text "File picker icon" is written in red. On the right, there is a folder icon, which is enclosed in a red rectangular box.</p>  |
| 3  | <p>Open a file dialog box is open.</p> <p>Press <b>Tab</b> to move focus to the My Drive tab</p> <p>Press <b>right arrow</b> to move focus to <b>Shared with me</b> tab</p> <p>Press <b>Enter</b>.</p> <p>Use <b>left/right arrows</b> to select the desired presentation.</p> <p>Press <b>Enter</b>.</p> |  <p>A screenshot of a file dialog box titled "Open a file". The "Shared with me" tab is selected and highlighted with a red box. Below the tabs, there is a grid of presentation thumbnails. The first thumbnail is labeled "SET-BC" and is also highlighted with a red box. Other thumbnails include "JUST A CAMERA", "Let's Animote", "STABLE STRUCTURES", and "DINOSAURS".</p> |

## Navigate the filmstrip column

4

The filmstrip column is the left sidebar of Google Slides. It displays thumbnails of the slides in the presentation.

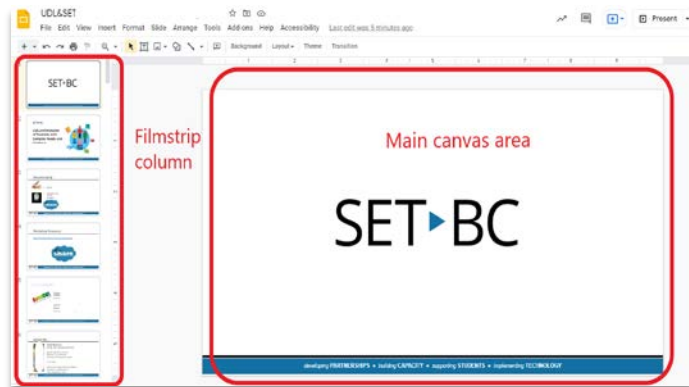
Browsing through the thumbnails gives you an overview of the content of each slide.

When you open a presentation, the JAWS focus will be on the first slide in the filmstrip column.

Press **page down** – next slide

Press **page up** – previous slide

Press **Tab** – navigate to the main canvas to hear the contents of the highlighted slide.



**Read the contents of a slide**

5

Press **Tab** – Moves the JAWS focus to the main canvas of the highlighted slide.

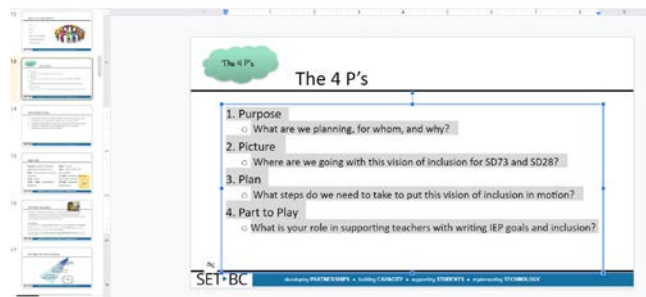
Press **Enter** – Activate JAWS selection mode.

**Up/down arrow** – read line by line.

**Right/left arrow** – read character by character.

**Esc** – Exit selection mode.

**Page up/down** – return to browsing the filmstrip column.



**Tip...**

Google Apps accessibility settings must be enabled for JAWS to function smoothly. This is typically only done once on the student's device. To enable accessibility settings:

Open Google Slides → Tools menu → Accessibility settings → Turn on screen reader support → Press OK.

