

Using Password Features in Clicker 8

Introduction

Password features in Clicker 8 allow you to protect Clicker sets or Display customizations from being edited. Student curiosity sometimes leads to inadvertent editing. Customized settings in voice, font size, colour contrast for backgrounds and text or accessibility can be password protected eliminating frequent adjustments.

Learning Objectives

Completing this tutorial will give you experience:

- Establishing a password in Clicker Options
- Using the password to protect settings

This tutorial assumes that

- You have Clicker 8 installed on a Mac or Windows computer
- You have saved Clicker sets

Case Study

Joey is a grade 4 student who uses Clicker 8 on their laptop. Joey is curious and likes to explore all the functionality on technology. Sometimes, when Joey gets 'behind the scenes' in a program they can inadvertently edit files or settings their teacher has set within Clicker.

Joey's teacher would like to password protect both files and settings within Clicker.

Steps to Follow

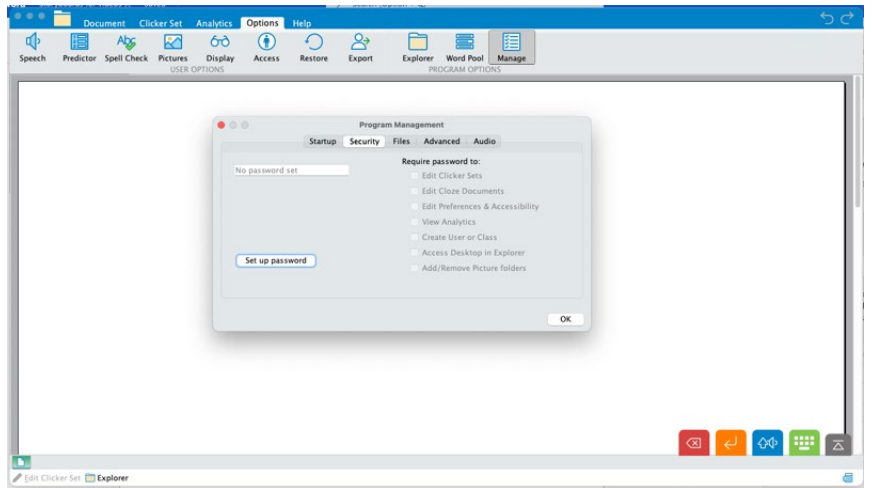
| Step | Instruction | Visual Depiction |
|------|-------------|------------------|
|------|-------------|------------------|

| | | |
|---|---|--|
| 1 | You will need the 20-digit serial number that you received when you acquired Clicker. | |
|---|---|--|

8***** G***** L***** Q*****

| | | |
|---|---|--|
| 2 | Open Clicker. Close the Explorer and click on the 'Manage' tab. | |
|---|---|--|

Click on the 'Security' tab

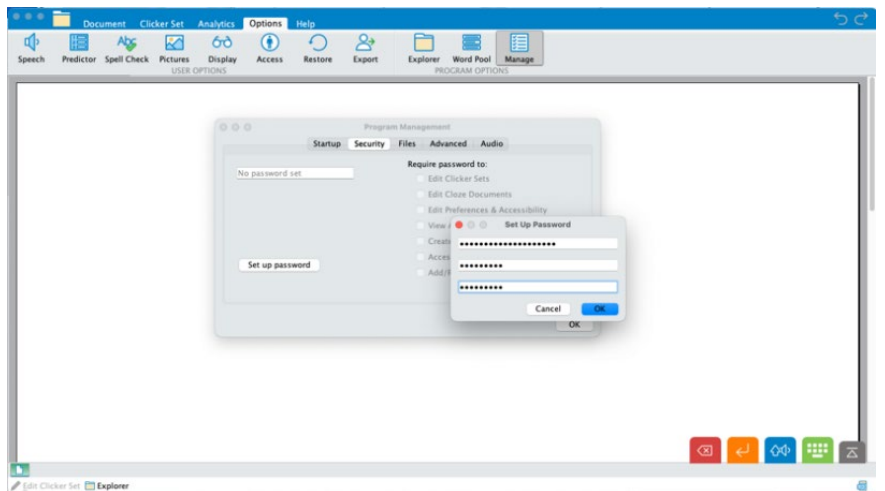


| | | |
|---|-----------------------------|--|
| 3 | Click on 'Set up password.' | |
|---|-----------------------------|--|

You will need to enter your Clicker 8 serial number (20-digits).

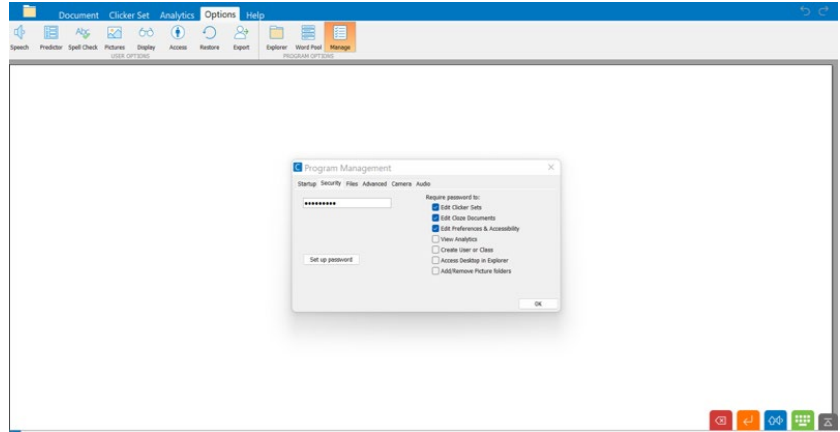
Create a password and confirm it. Click OK.

This will set up your password and you will only need to do this once.



| Step | Instruction | Visual Depiction |
|------|-------------|------------------|
|------|-------------|------------------|

| | |
|---|---|
| 4 | Enter your password. Select the items from the right that you would like to password protect. Click <i>OK</i> . |
|---|---|



| | |
|---|--|
| 5 | Now when you select an option that has been password protected, you are prompted to enter your password. |
|---|--|

