

Customizing the Explorer in Clicker 8

Introduction

You can simplify file organization when using Clicker. Having a designated place where student work and Clicker files are stored can support file management.

Learning Objectives

Completing this tutorial will give you experience:

- Navigating the Explorer in Clicker
- Removing unwanted storage locations within the Explorer
- Assigning a specific location where you want files stored

This tutorial assumes that

- You have Clicker 8 installed on a Mac or Windows computer
- You want Clicker files saved

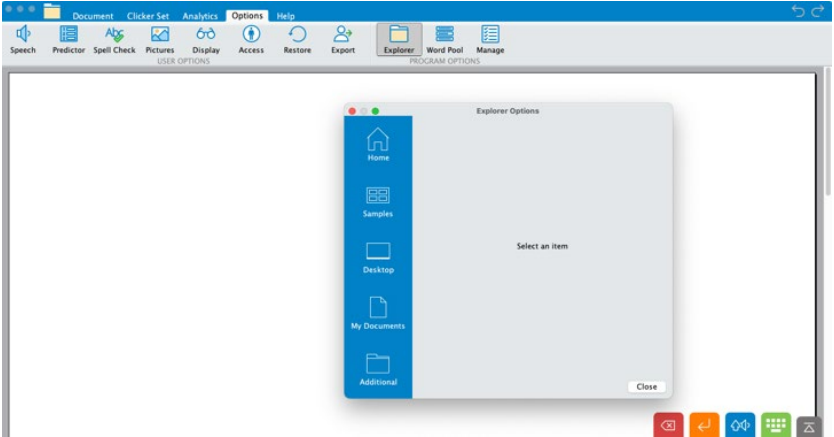
Case Study

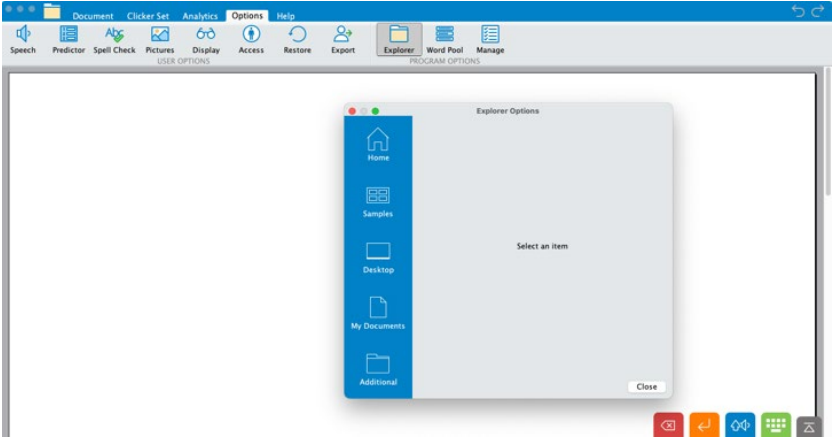
Asha is a grade 8 student who uses Clicker 8 on their laptop. They have a cognitive impairment and find it difficult to navigate computer files. Finding files and deciding where to save files takes away valuable learning time.

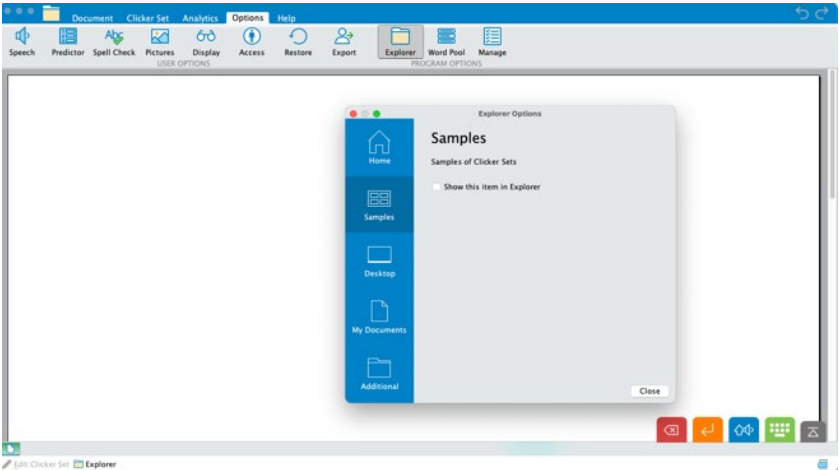
Asha's teacher would like to designate a file storage location for Asha's Clicker work.

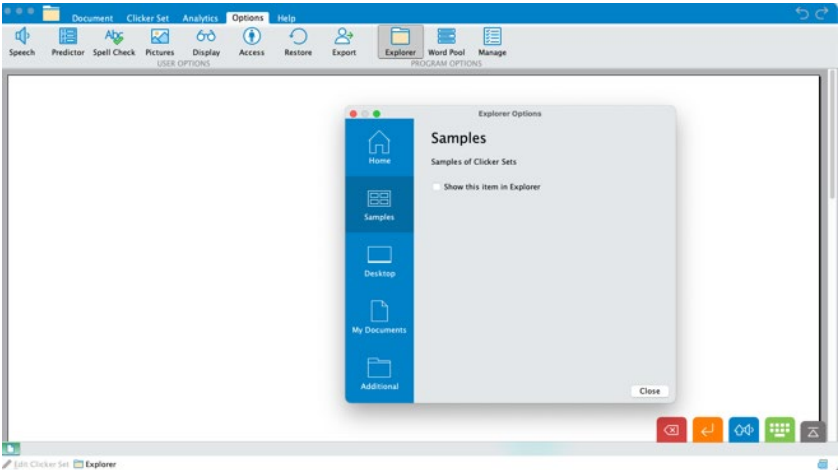
Steps to Follow

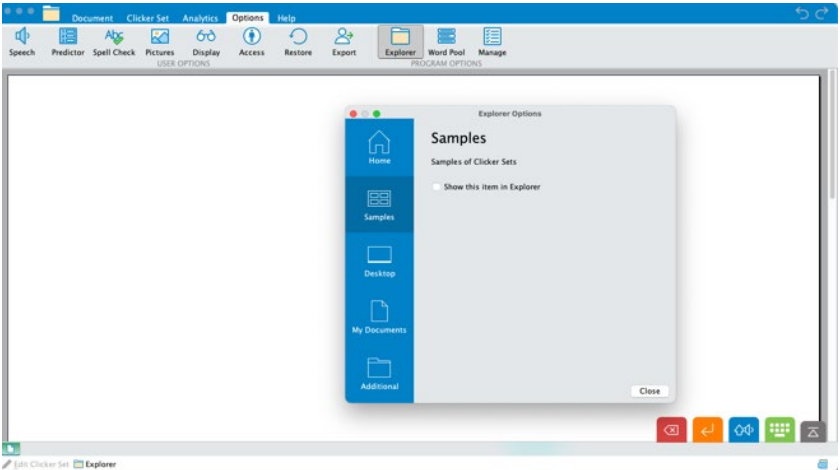
Step	Instruction	Visual Depiction
------	-------------	------------------

1	<p>Open Clicker.</p> <p>Close the Explorer.</p> <p>Click on 'Options' then the Explorer icon.</p>	
---	---	--

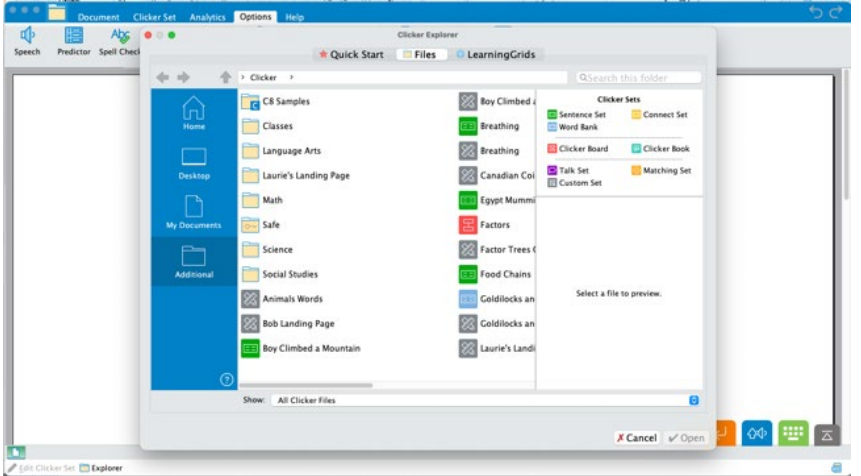


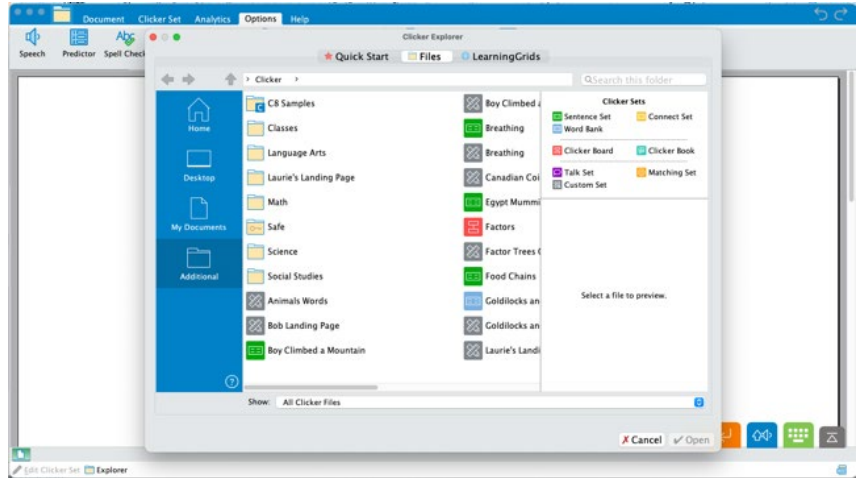
2	<p>You need to know where you would like the files to be saved.</p> <ul style="list-style-type: none"> -the desktop of the student device? -online storage? -within the Clicker program? 	
---	---	--

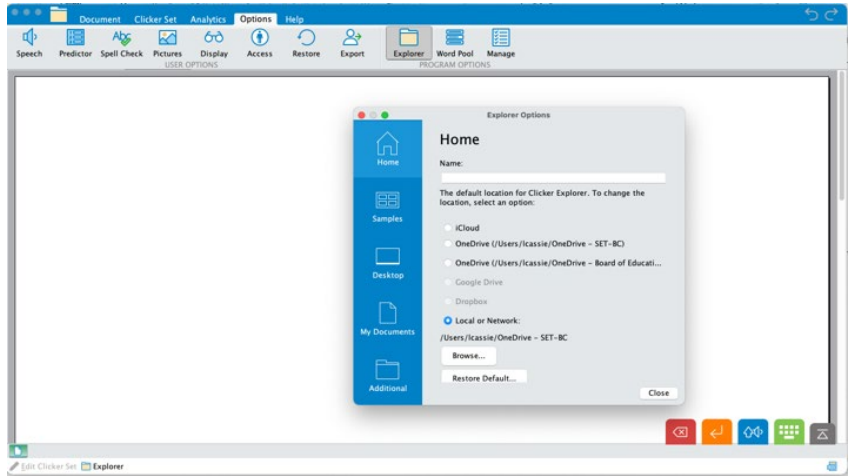


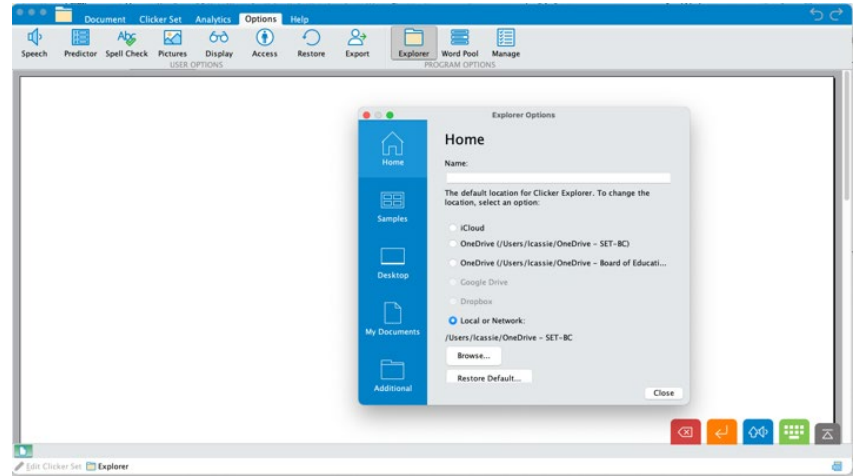
3	<p>From the blue ribbon on the left, select a location you do NOT want available.</p> <p>For example, click on the 'Samples' icon.</p> <p>You will be given the option to have 'Samples' removed from the blue bar of storage options.</p>	
---	--	--

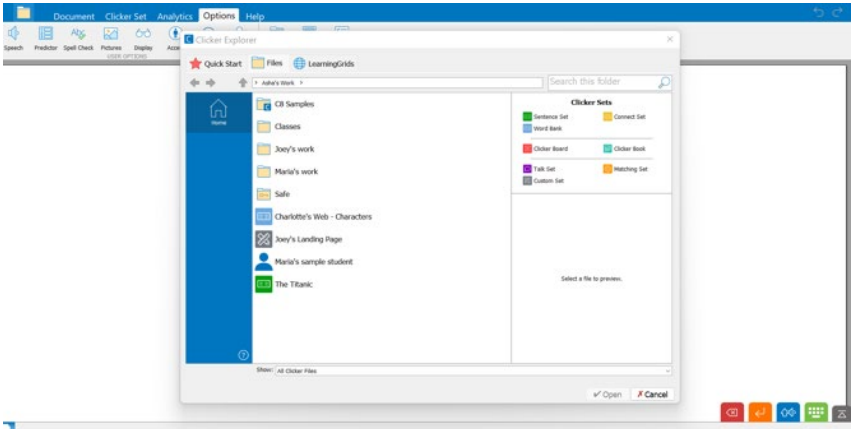
Step	Instruction	Visual Depiction
------	-------------	------------------

4	Once you have unchecked a storage location, and clicked <i>Close</i> , you will notice the blue ribbon no longer has that storage location; in this case the Samples folder is gone.	
---	--	--



5	Remove the other unwanted storage locations following the steps above. When you have only the 'Home' icon remaining, select your default storage location.	
---	---	---



6	Notice that now when the student saves files, they have only one location available to them.	
---	--	--

